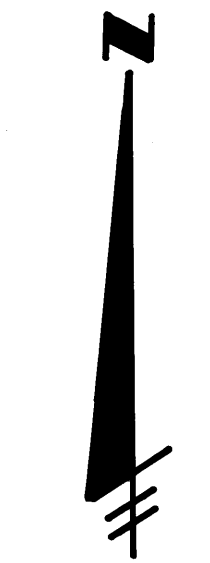


**DUCKWOOD P.U.D.**  
 IN PART OF SECTION 36, TOWNSHIP 38 SOUTH, RANGE 41 EAST  
 MARTIN COUNTY, FLORIDA  
 GEE & JENSON  
 ENGINEERS - ARCHITECTS - PLANNERS, INC.  
 WEST PALM BEACH, FLORIDA  
 APRIL 1985

I, Louise V. Isaacs, Clerk of the Circuit Court of Martin County, Florida, hereby certify that this plat was filed for record in Plat Book 70, Pages 9, Martin County, Florida Public Records, this \_\_\_\_\_ day of \_\_\_\_\_ 1985 A.D.

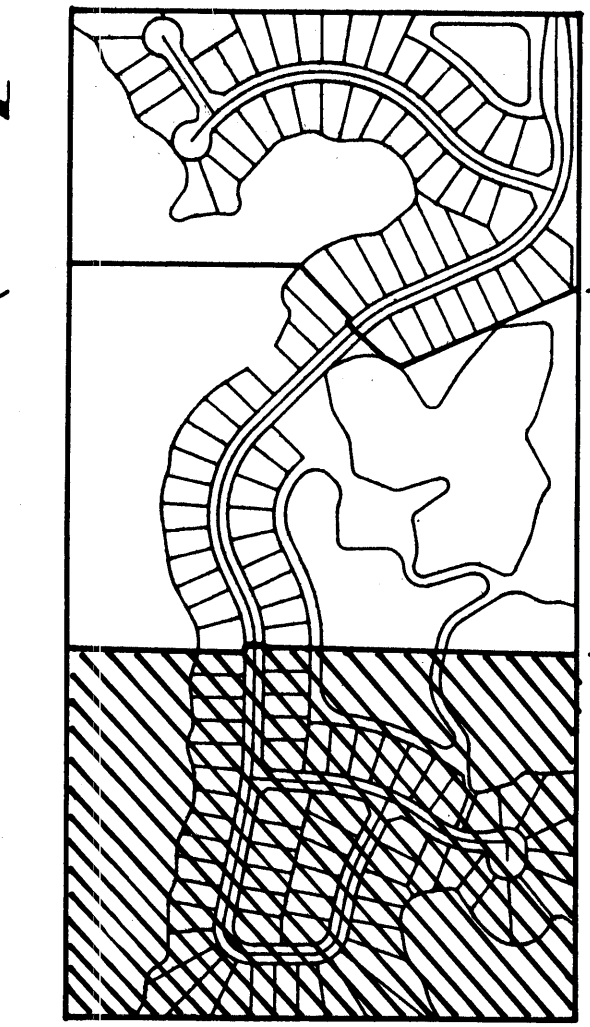
LOUISE V. ISAACS, CLERK  
 CIRCUIT COURT  
 MARTIN COUNTY, FLORIDA

FILE NO. \_\_\_\_\_  
 BY: \_\_\_\_\_ Deputy Clerk



UNPLATTED

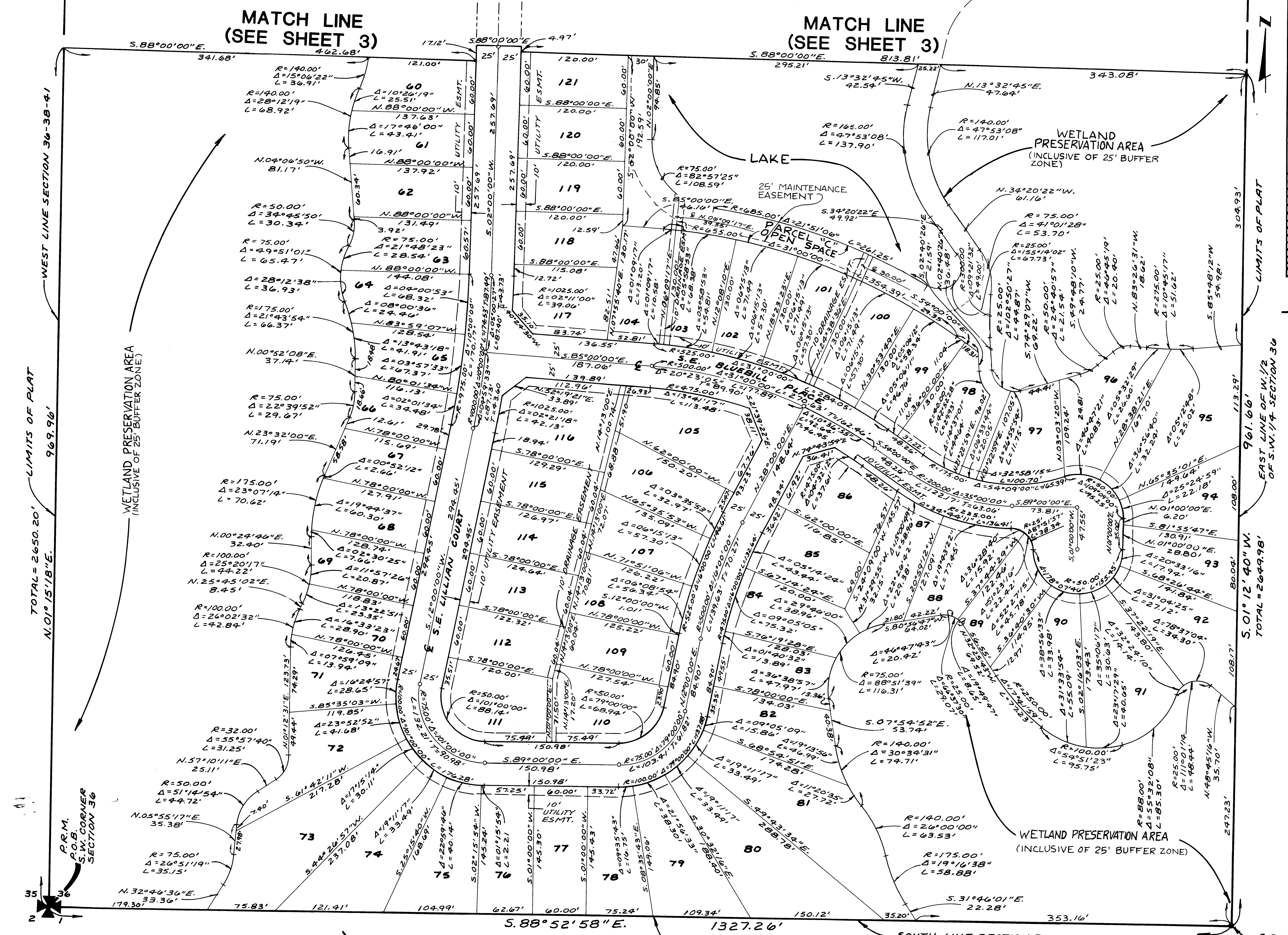
UNPLATTED



**KEY MAP**  
 N.T.S.

SHEET 2  
 SHEET 3  
 SHEET 3  
 SHEET 4

**STUART GARDENS**  
 P.B. 2, PG. 40



COMPUTED W/J.A.D.  
 DRAWN D.C.B.  
 CHECKED HAP  
 APPROVED \_\_\_\_\_